

Lake Seldom West Grazing Bid Description

Scope of Work

The City of Holdrege seeks cattlemen to graze their herds at Lake Seldom West (SE ¼ Sec 5-5-18, Phelps Co. Nebraska). Both grass and wetlands will be grazed. Grazing is needed to keep upland grass and wetlands in early successional diverse condition. Grazing will initially be directed towards newly emergent perennial wetland plants in wetland footprint acres. The maximum stocking rate is 75 AUM (Animal Unit Month). Grazing needs to occur between September 15, 2019 to November 15, 2019. Subsequent annual leases will be available to winning cooperators if an evaluation of 2019 grazing is positive. Stocking rates, timing and duration will be planned for annually.

Stocking Rate 2019

Approx. 75 AUM (Animal Unit Month)

Animal Unit

Cow calf pair, 1 Steer or bull, bred or open cow/heifer, weaned calf =1

Bidding: Bids will be for \$ per 1 AUM (1 AU (Animal Unit) x 30 (days)

Herd size: We are looking for a herd size of 25 AU's to graze the property for 3 months.

Special provisions: Area to be grazed may need more, or less grazing to reach management objectives. In such a situation grazing duration may be shortened or extended at original winning bid rate per AUM. Temporary herd number adjustments may be required or additional isolated/focused grazing.

Fence Maintenance: Entire perimeter fence will be inspected by Tri-Basin NRD Land Manager (or other representative) and winning bidder before cattle are turned out, and again after grazing. Any damages that occur during grazing must be repaired by winning bidder. All temporary fence will be provided by and removed entirely by the winning bidder.

Water: There is a well and water tank available on this property.

BID:

\$/1 AUM: _____ **Herd Size:** _____ :

Signature: _____ **Date:** _____ :

Phone#: _____ **Address:** _____ :

Bids need to be sent back to Tri-Basin NRD Land Manager Nate Munter at 1723 N. Burlington Holdrege, NE. 68949 or email (nmunter@tribasinprd.org) no later than August 1, 2019.

Questions about bid can be answered by Tri-Basin NRD Land Manager Nate Munter 308-995-6688.

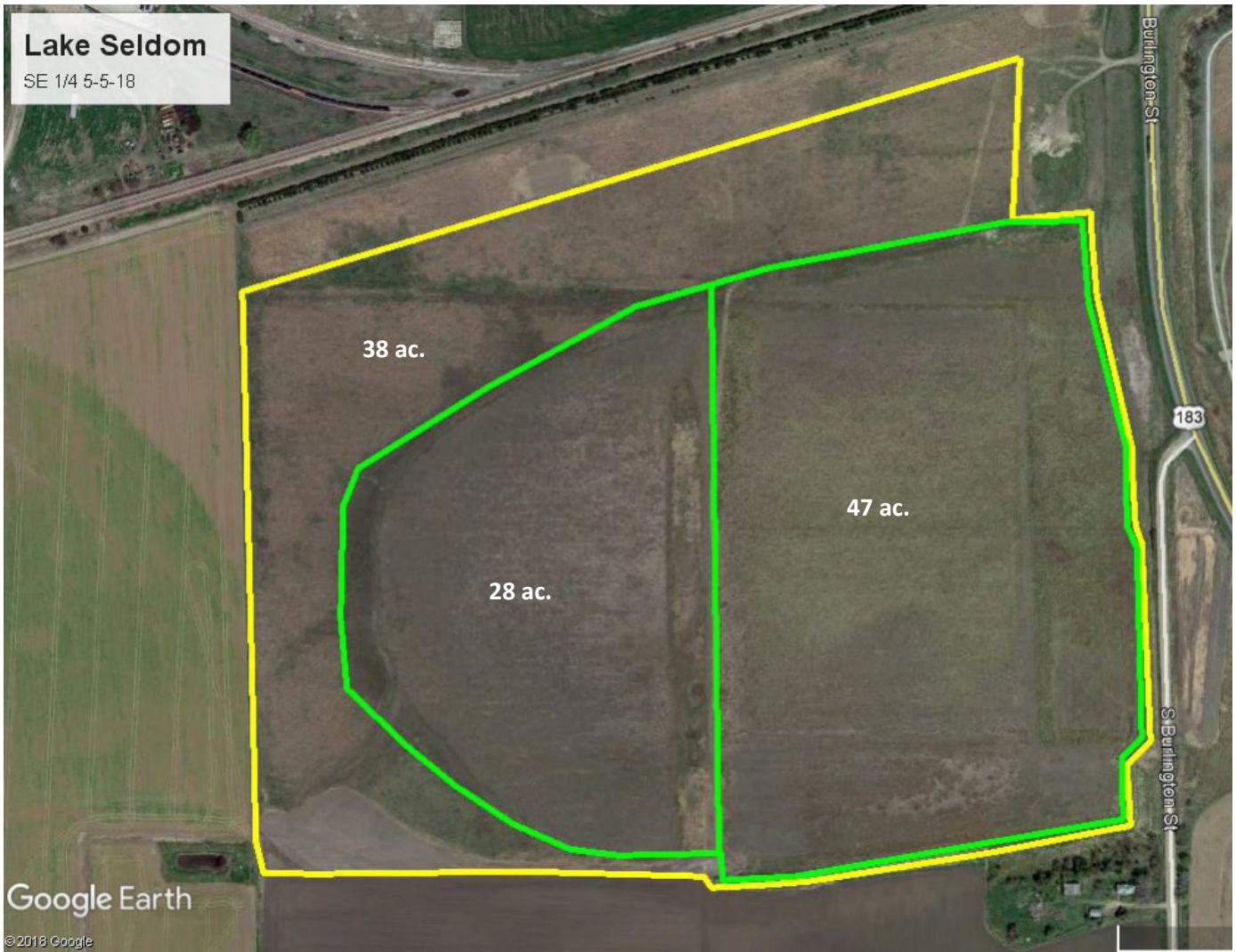
Example Bid:

\$/1 AUM: \$1/1 AU x 30 days = \$30.00/AUM **Herd Size: 25**

\$30.00/AUM x 75 AUM = \$2,250.00 total charge for grazing

Lake Seldom

SE 1/4 5-5-18



38 ac.

28 ac.

47 ac.

Burlington St

183

S Burlington St

Google Earth

©2018 Google